

catalogue 2017



# MAGNUS

hangar doors









## IM.VA. SRL

### Production facilities

Production is carried out in two adjoining facilities of a total of approximately 7000 m<sup>2</sup>.







## The company today

**IM.VA.** was founded in 1973 by Imes Tinti and his son Vanni, the latter being the current President of the company. Since then, the small metal carpenter's workshop has grown into a ultra-modern industrial company specializing in the production of technical doors.

Insulated door production began in 1999 as the brainchild of Vanni Tinti, ushering in mass production. Today, IM.VA. supplies a full range of technical doors, both for industrial and residential use, in a great variety of forms and solutions.

Over the years IM.VA. has consistently sought out new challenges and opportunities, becoming an essential player in public and private tenders and positioning itself as industry leader, both in Italy and abroad, by way of its creativity, social awareness and manufacturing capacity.

IM.VA. quality comes from the passion it invests, the high quality control standards it has developed from experience and the refined installation and maintenance services it offers.

IM.VA.'s use of the most advanced technologies, the highest quality of materials and the strictest quality controls extended over the whole value chain is indisputably and globally acknowledged, generating intense customer satisfaction and loyalty.







**IM.VA.** provides global solutions for industrial and residential doors, resolutely putting the customer first. The acute expertise of its own personnel and of long-standing consultants is one of the driving factors that make IM.VA. a leader at home and abroad, wherever custom solutions are needed.

IM.VA.'s consistent quality control of raw materials, fine attention to detail, cutting-edge production facilities, expertly skilled labour and constant pursuit of ever greater quality all guarantee the highest of standards in full compliance with national and international regulations.







**Installation and support.**

**Professionalism** and experience at the service of every customer.





## Tradition and innovation

Mario Tinti, born in 1877, Renzo Tinti, in 1900, and Imes Tinti, in 1924, are the artisans who converted the great family tradition of metalworking to the foundation of **IM.VA.** in 1973.

Straight after graduating from Technical and Industrial School, Vanni Tinti, the current president of the company, dedicated himself to the family business alongside his father. As the brainchild of Vanni in 1999, IM.VA. began mass production of industrial doors. Today, IM.VA. offers a fully comprehensive range of technical doors for industrial and residential use.



Mario Tinti



Renzo Tinti



Imes Tinti



1960



Vanni Tinti



2016



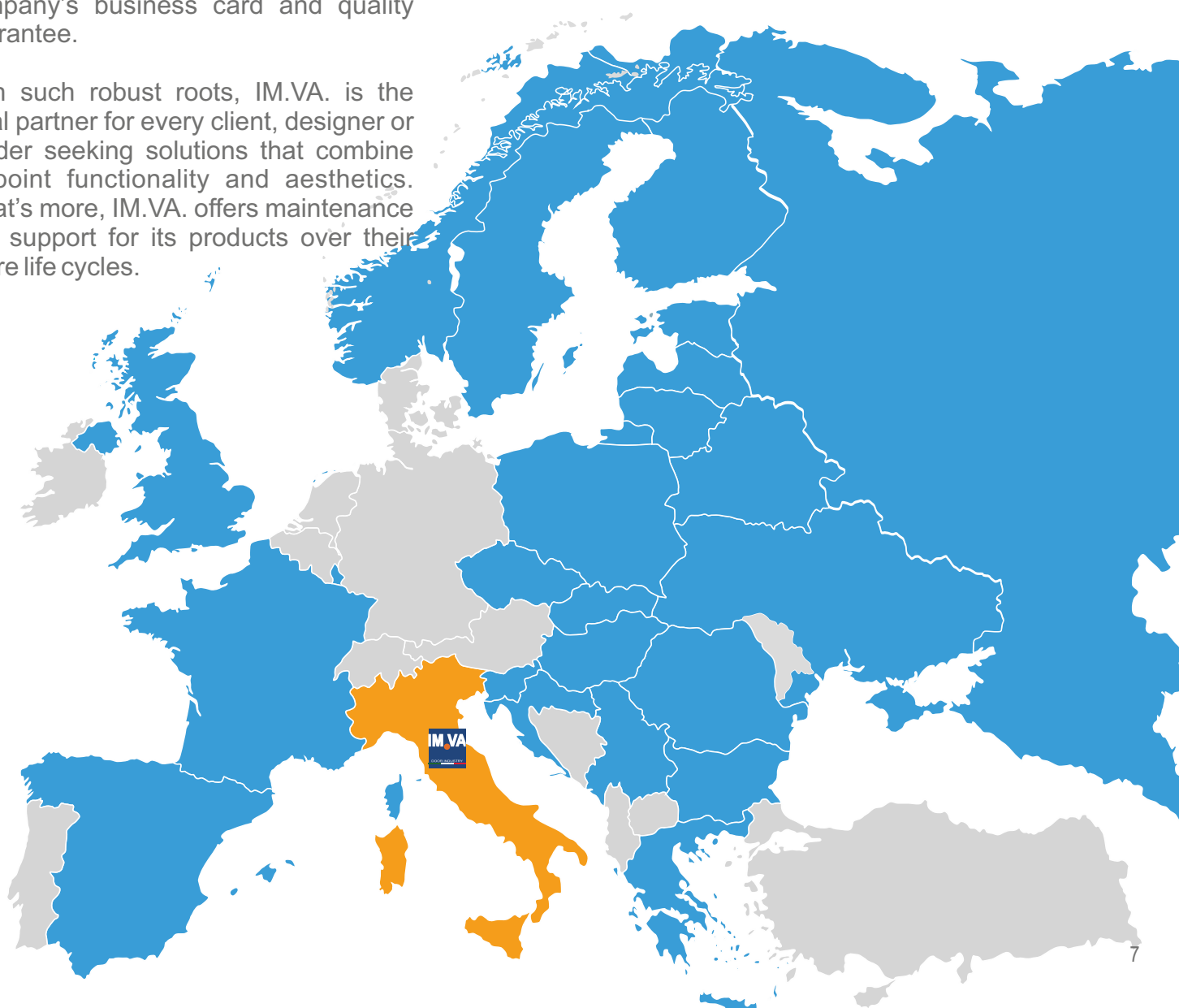


## Different by choice, the best by vocation

■ Sales Partners

**IM.VA.** draws on an experience of over forty years in the industry, growing hand in hand with the evolution of technology. The production of large volumes has never detracted from IM.VA.'s capacity to deliver the custom solutions and innovative designs that sector-specialists desperately want. The extensive use of cutting-edge and exclusive patented technology is the company's business card and quality guarantee.

With such robust roots, IM.VA. is the ideal partner for every client, designer or builder seeking solutions that combine on-point functionality and aesthetics. What's more, IM.VA. offers maintenance and support for its products over their entire life cycles.



**CERTIFICATES**  
IMVA's products comply with regulations and laws in force.





# MAGNUS

## hangar doors

### PRODUCTS INDEX

page 10	<b>ALU LINE</b> aluminium doors
page 11	<b>Foldy</b> folding door, ground supported
page 14	<b>Corner</b> sliding door, ground supported
page 18	<b>components and accessories</b>
page 20	<b>STEEL LINE</b> steel doors
page 21	<b>Slidy</b> sliding door, ground supported
page 24	<b>assembly</b>



Folding  
door



Sliding  
door

# ALU LINE

aluminium doors





ALU LINE

## Foldy

### Folding door, ground supported

- Folding to one or both sides
- Motor-operated "Deadman" control
- Maximum height 13.60 m.



ALU LINE





## ALU LINE

Industrial door made of vertical folding door with leaves opening to one or both sides.

Special upper double-track rail made of aluminum, with a secondary rail and derailleur in the leaves packing area.

Bottom rail of appropriate size made of galvanized steel.

Doors are made of variable sized leaves with perimeter frame made of extruded aluminum profiles and cladding with insulated panels and/or partially glazed.

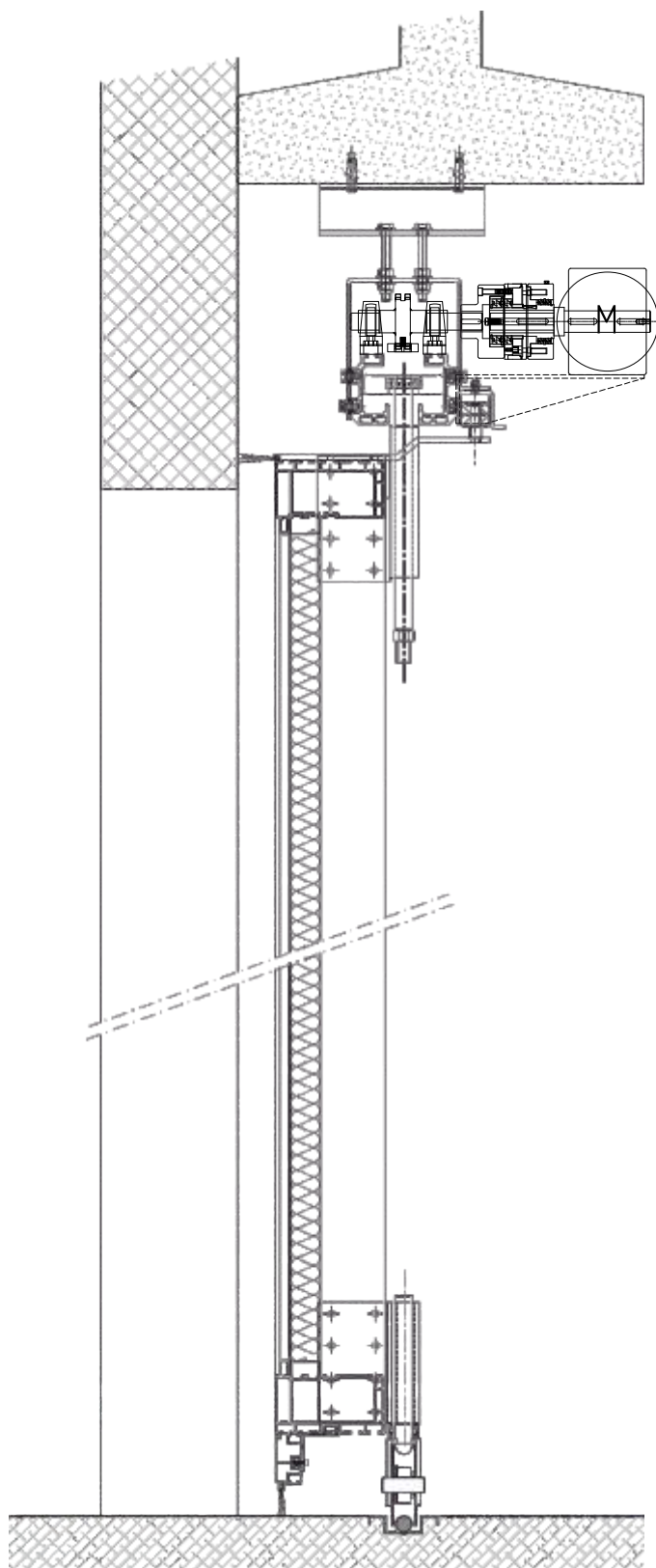
Hinges are made of extruded aluminum alloy, equipped with nylon bushings, loaded with fiber glass and Teflon and fixed to the door frame by means of mounting plates.

Side sealing and sealing between the leaves by means of anti-crush, anti-aging multi-chamber EPDM seals.

Floor sealing by means of nylon brushes.

Automation by means of towing chain driven by a three-phase, electro-mechanical motor, with emergency release and a control unit equipped with inverter, with Open-Stop-Close buttons.

Product certified according to Standard **EN 13241-1**.



ALU LINE

## Corner

### Sliding door, ground supported

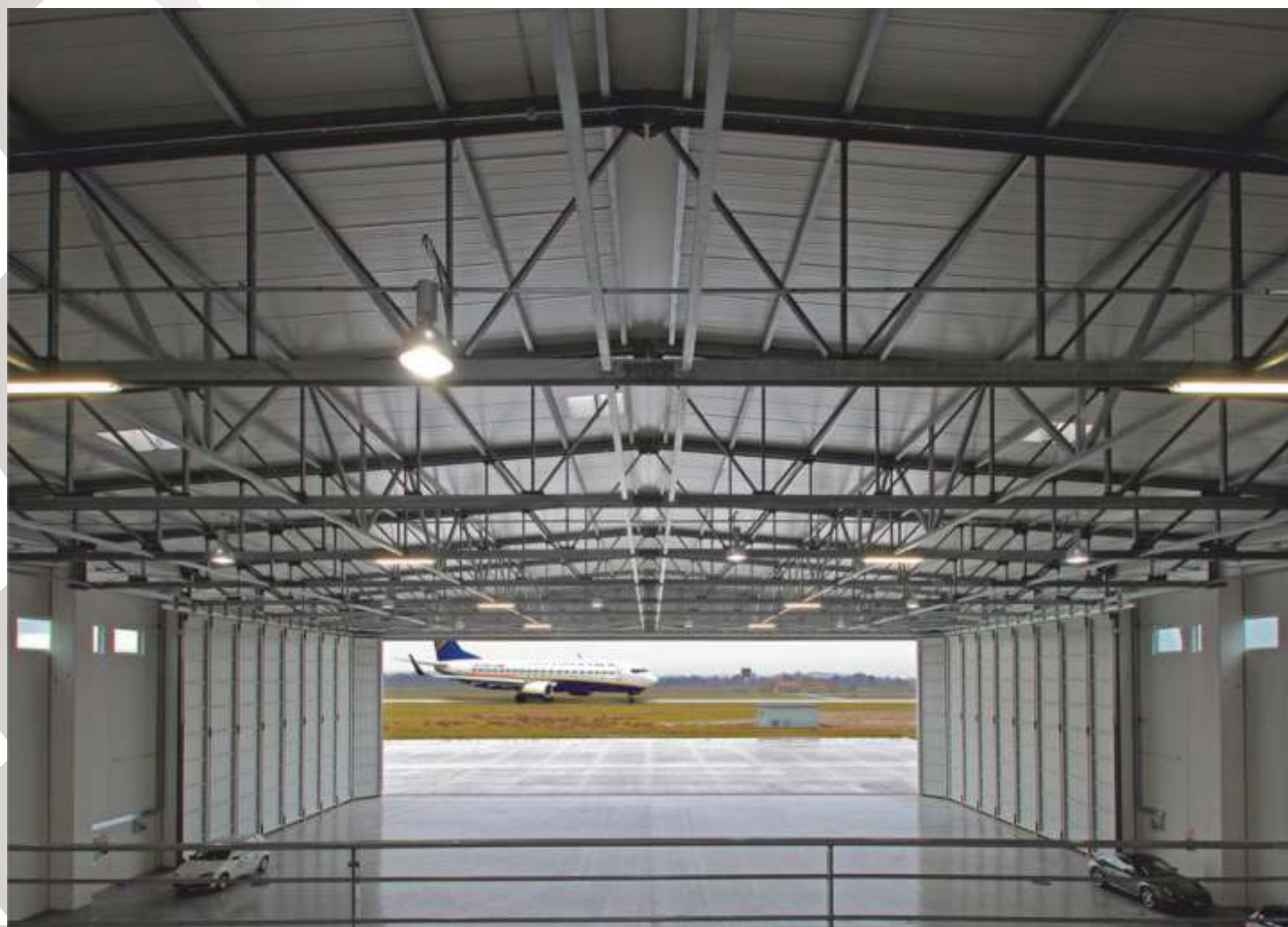
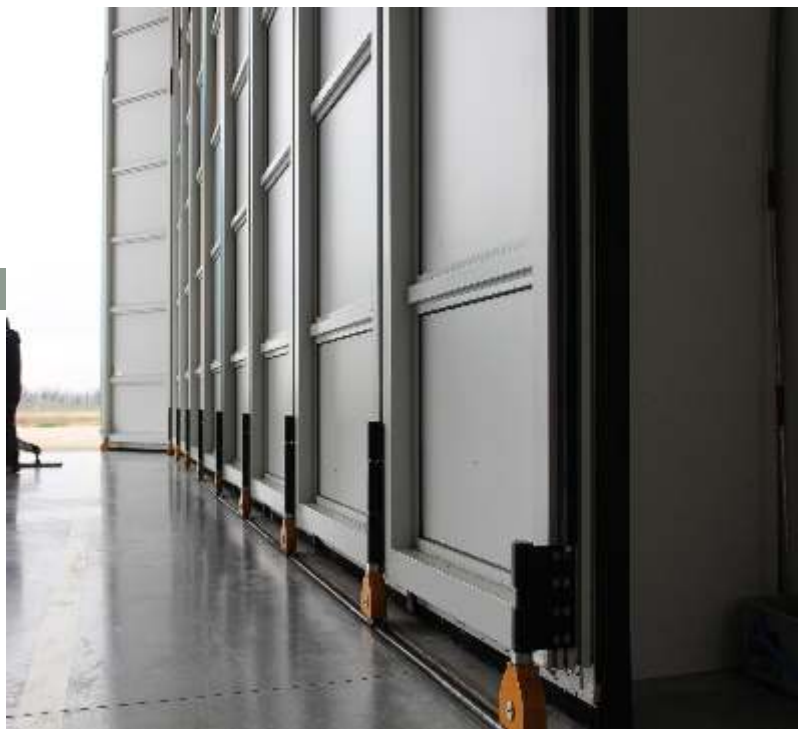
- Sliding to one or both sides
- Motor-operated “Deadman” control
- Maximum height 13,60 m.







ALU LINE





ALU LINE





## ALU LINE

Industrial door made of vertical sliding door leaves opening to one or both sides, sliding on one or more rails.

The upper rail is a special aluminum double-track.

Bottom rail of appropriate size made of galvanized steel.

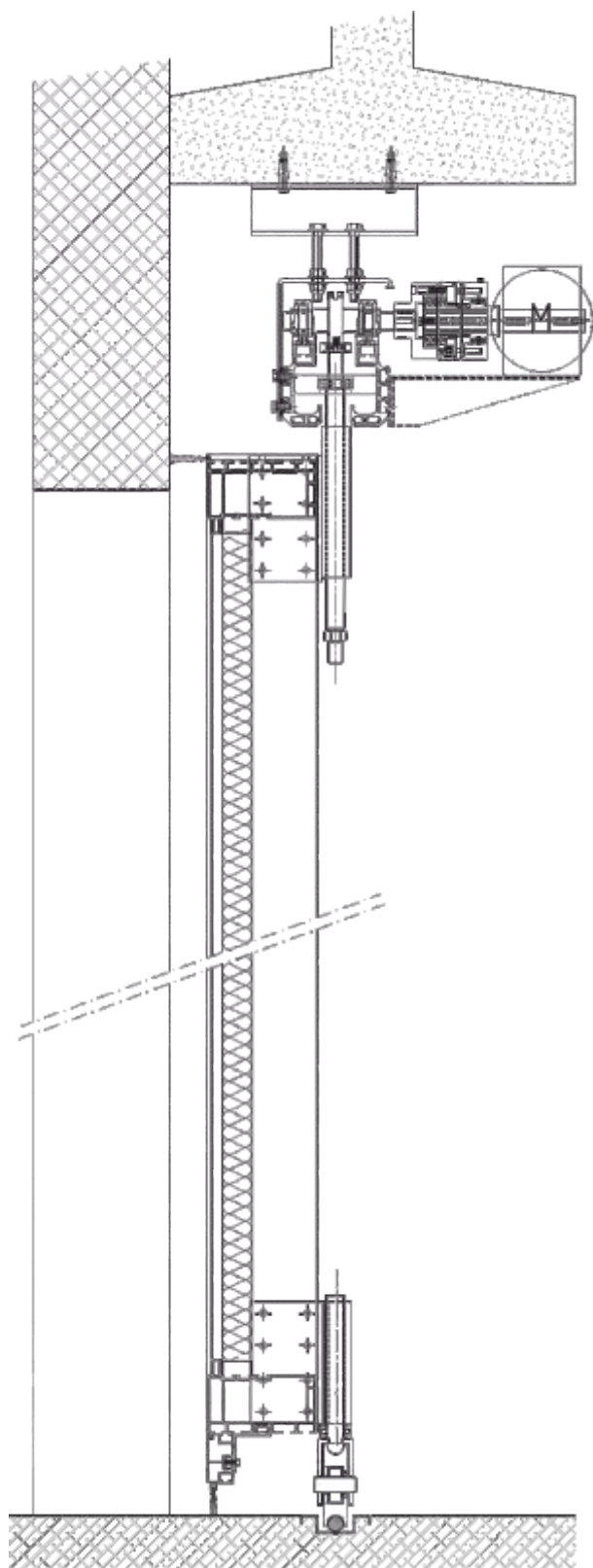
Doors are made of variable sized leaves with perimeter frame made of extruded aluminum profiles and filled with insulated sandwich panels and/or partially glazed.

Side sealing and sealing between the leaves by means of anti-crush, anti-aging multi-chamber EPDM seals.

Floor sealed by means of nylon brushes.

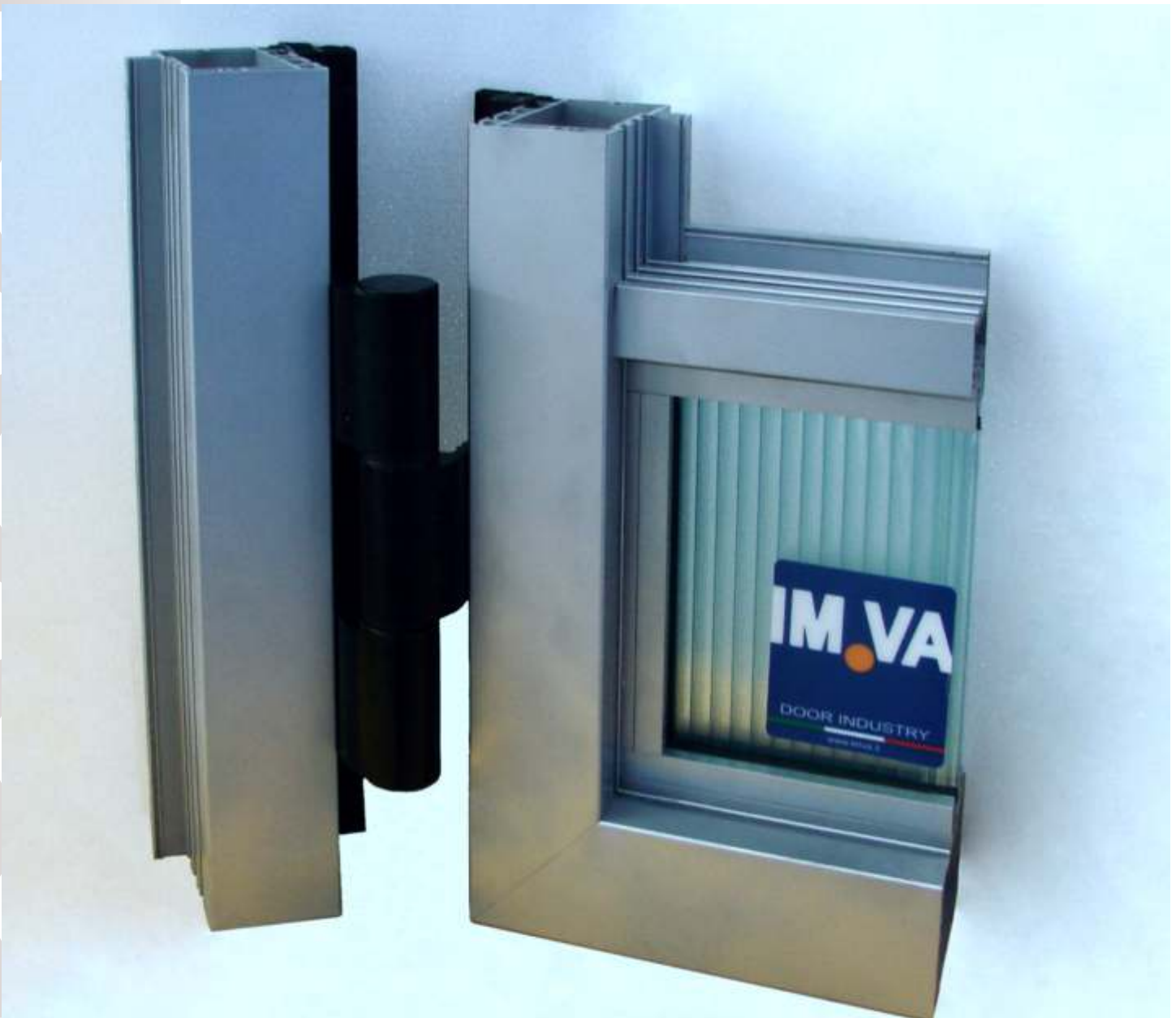
Automation by means of towing chain driven by a three-phase motor, controlled by a control unit equipped with inverter, with Open-Stop-Close buttons.

Product certified according to Standard **EN 13241-1**.



# components and accessories

Sections of door leaves  
joined by hinges of extruded  
aluminum alloy and between  
leaves sealing.





Upper rail made of extruded aluminum of variable size and relevant trolleys.



Aluminum door leaf frame assembled by means of concealed brackets.



# STEEL LINE

## steel doors

### Slidy

#### Sliding door, ground supported

- Sliding to one or both sides
- Motor-operated "Deadman" control
- Maximum height 25 m.





# Steel Line



# STEEL LINE





## STEEL LINE

Industrial door made of sliding door leaves opening to one or both sides, sliding on one or more rails.

Special upper rail made of adequately sized steel beams.

Modular bottom rail made of laminated steel squared profiles.

Door leaves are made of duly sized, hot galvanized metalwork for assembling on site.

Cladding with insulated sandwich panels and/or glazing.

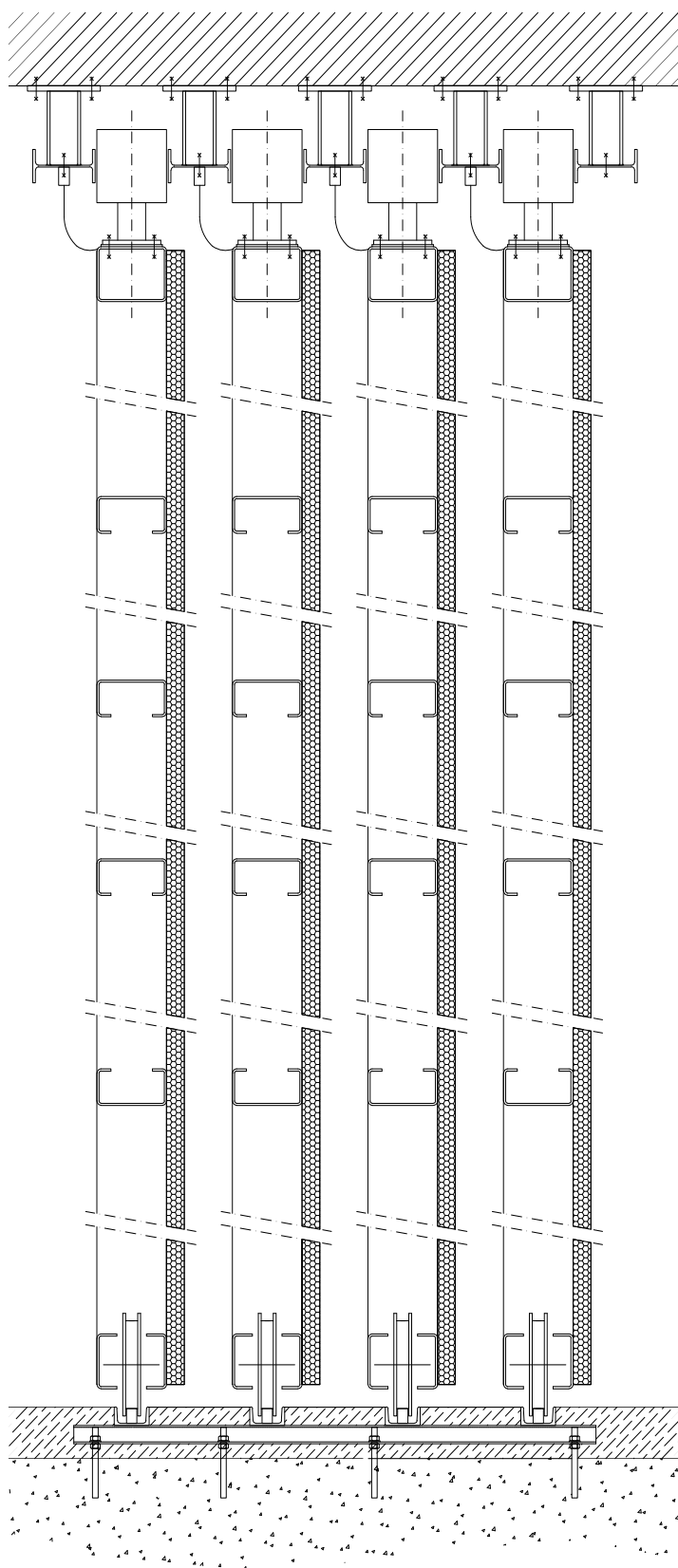
Side sealing and sealing between the leaves by means of painted metal sheet and nylon brushes.

Floor sealing by means of nylon brushes. Movement by means of two wheels fitted to the lower crosspiece of each leaf; one of them has a toothed crown connected by chain to the gear motor.

Automation by means of a three-phase, electro-mechanical motor equipped with emergency release and a control unit with inverter, with Open-Stop-Close buttons.

Bus-bar power supply system.

Product certified according to Standard **EN 13241-1**.



# assembly







*your notes ...*





*your notes ...*



From the family museum,  
tools and machinery used from  
1900 onwards by the company  
Tinti Imes and son (Iron machining)



Calender



Drill press



Crossbow  
power hammer



Calender  
for farm carts  
ringing

Publishing project, drawings and design :  
IMVA Team + robertoceroni97.5

Concept and graphics :  
robertoceroni97.5

Photography :  
IMVA Team

Images copyright :  
[www.shutterstock.com](http://www.shutterstock.com)

Print by :  
Nuova Grafica Imola

printed :  
31/04/2017

IM.VA. srl  
via Buoizzi, 4a  
41030 San Prospero (MO) Italy  
tel. +39 059 908313  
fax +39 059 906301  
P.IVA 02568040360  
[info@imva.it](mailto:info@imva.it)  
[www.imva.it](http://www.imva.it)

IMVASTore  
Via Emilia, 151  
40060 Toscanella di Dozza (BO)  
Tel. 0542 672706  
[imvastore@imva.it](mailto:imvastore@imva.it)  
[www.imvastore.it](http://www.imvastore.it)

IM.VA. srl reserves the right to make changes at any time it deems appropriate. The colors shown are purely indicative. Even partial reproduction is forbidden, if not explicitly authorized.





IM.VA. srl  
via Buoizzi, 4a  
41030 San Prospero (MO)  
tel. +39 059 908313  
fax +39 059 906301  
info@imva.it  
www.imva.it